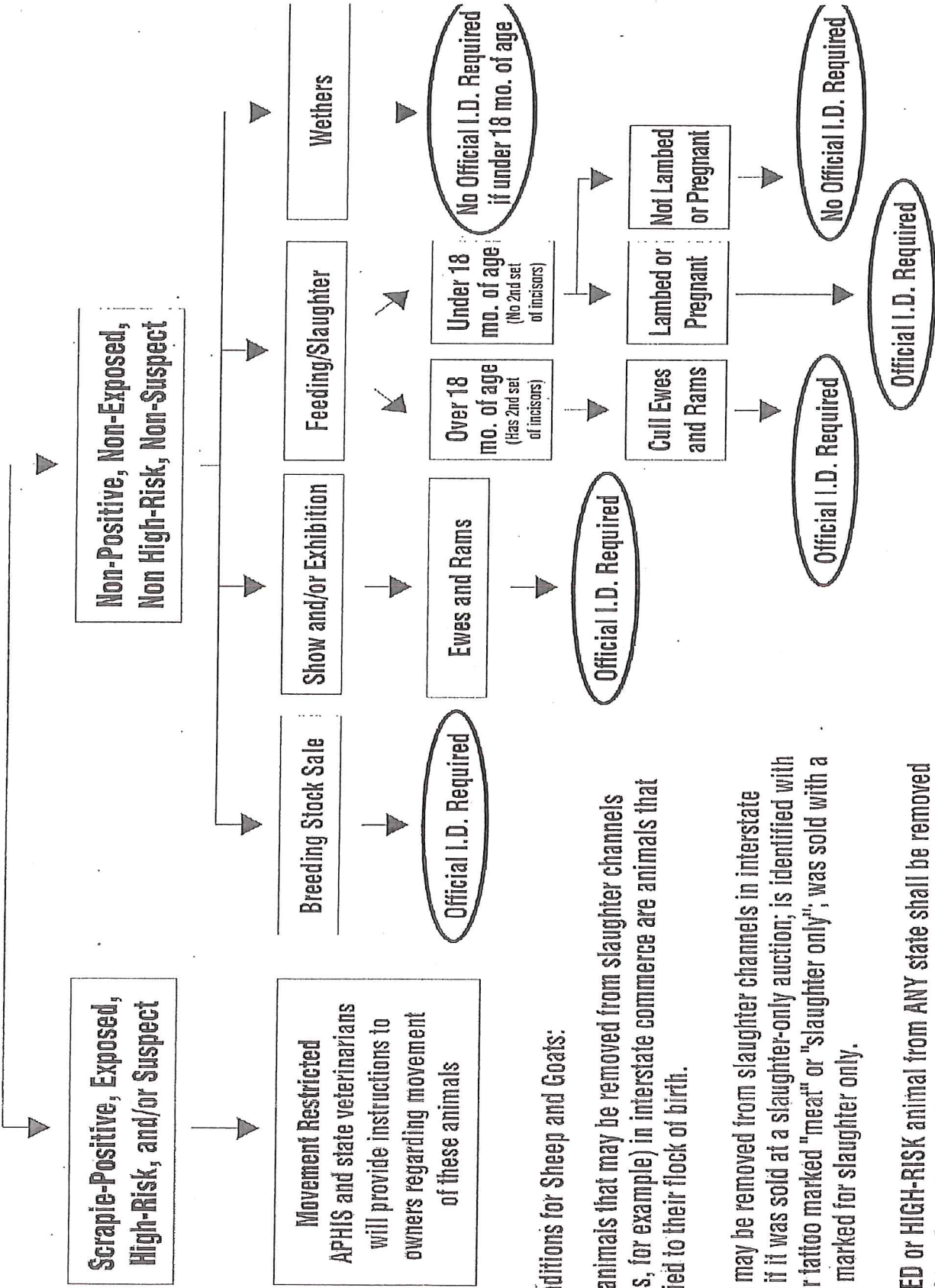


SHEEP



General Conditions for Sheep and Goats:

- The ONLY animals that may be removed from slaughter channels (ewe lambs, for example) in interstate commerce are animals that are identified to their flock of birth.
- NO animal may be removed from slaughter channels in interstate commerce if it was sold at a slaughter-only auction; is identified with a tag or ear tattoo marked "meat" or "slaughter only"; was sold with a bill of sale marked for slaughter only.
- NO EXPOSED or HIGH-RISK animal from ANY state shall be removed from slaughter channels once it has entered interstate commerce.

GOATS

Scrapie-Positive, Exposed,
High-Risk, and/or Suspect

Non-Positive, Non-Exposed,
Non High-Risk, Non-Suspect

Movement Restricted
APHIS and state veterinarians
will provide instructions to
owners regarding movement
of these animals

